



LANDMARK CROWN

lifestyle at the edge of kota | **Landmark City**

For Sales Assistance Call : 9214447956-60 (5 lines)



BHATIA GROUP

SETTING BENCHMARKS. CREATING LANDMARKS...

Bhatia & Company

Corporate Office : 23-24 B Small Scale Industrial Area, Opp. Rajasthan Patrika, Kota 324007

Email : marketing@shubhamgroup.info



Builders & Developers Bhatia Colonizers Pvt Ltd

Site Office : Landmark City, Adjoining Housing Board CC Road, Opp. Bhandari's Mahaveer Mission Hospital, Bundi Road, Kota 324008
Ph. : 0744-6441444



Corporate Office : Shubham Group, Choudhary Hotel Premises, Near Aerodrome Circle, Kota (Raj.) 324007
Ph. : 0744 2363949, 6451444
www.shubhamgroup.info

www.facebook.com/shubhamgroupkota

Architects : Lahoty Associates, Danik Navjyoti Press Road, Near Chawani Circle, Kota (Raj.) Ph. : 9414186040

The images shown are artist impressions and are for representation purpose only and should not be construed as a promise made by the developer for amenities in the building/ apartments. The delivery of the product will be as per the mutually agreed list of amenities which will be finalized with the purchaser individually and mentioned in the AGREEMENT/REGISTRATION FORM. Builders & Developers reserve the right to change any design & specification of the building without any prior notice or information / or as per approval of respective authorities. This brochure is for illustration purpose only & cannot in any way to be treated as a Legal Document/ or a commitment on the builders part.

Tech N Gen # 9829334122, 9799390022

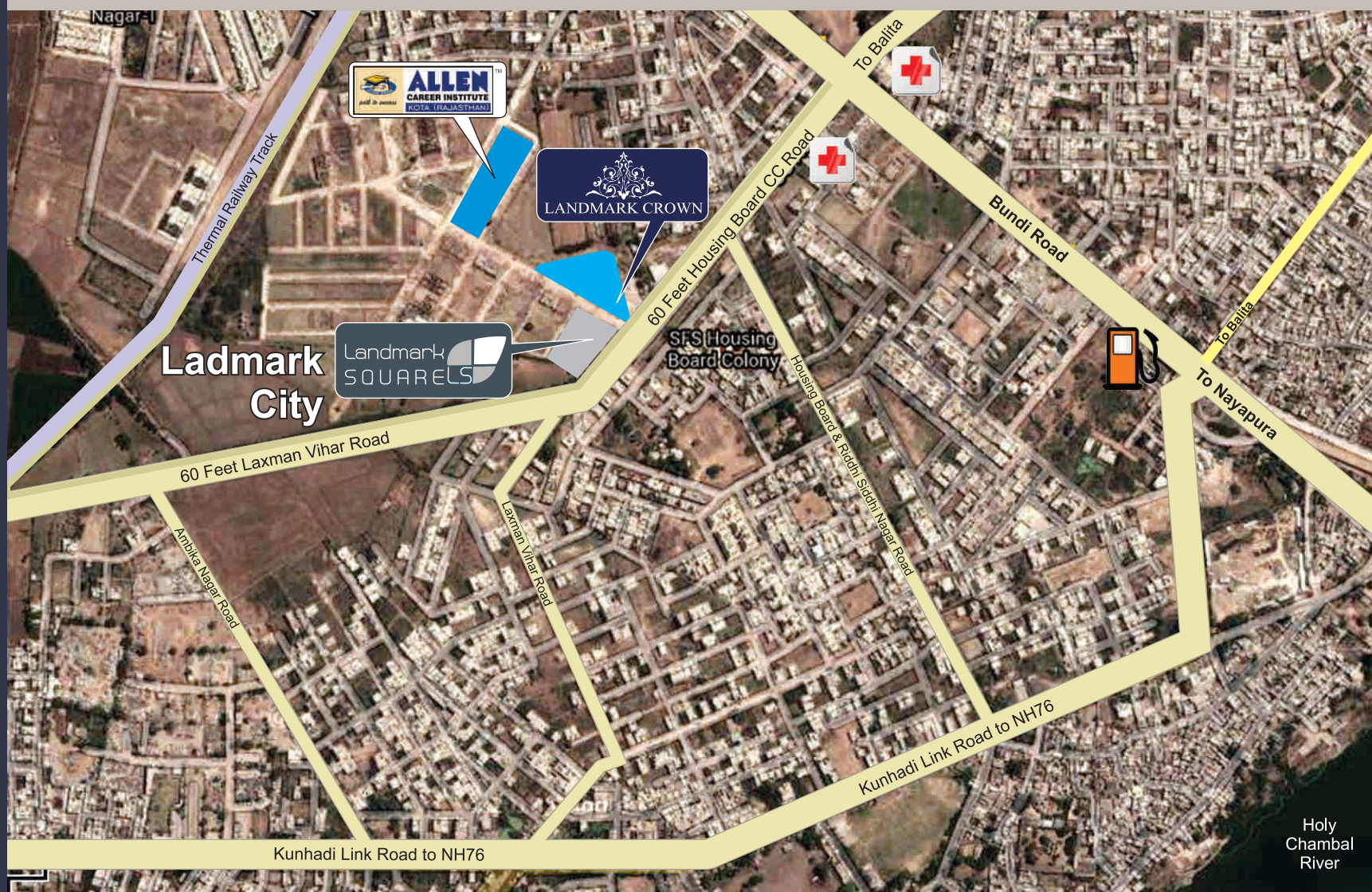
Limited Edition *homes* with unlimited *happiness...*

limited edition homes

Inimitable Adobes, Prime Location

Welcome to
the ultimate heights of ecstasy

LANDMARK CROWN



Living in Landmark Crown, will make your friends envious.

One of the main features of the apartments is its Central Location at Bundi Road, Kota. Surrounded by all basic facilities within the close vicinity of the Business District, Railway Station, Bus Station, at an easy access to upcoming mall, restaurant, hotels etc...

We take pleasure in welcoming you to the ultimate heights of ecstasy, "LANDMARK CROWN"- The luxurious residential apartments, well ventilated & professionally designed adjoining the new upcoming, a state of art educational hub of ALLEN CAREER INSTITUTE.

Location Map

Landmark Crown @ Landmark City, Bundi Road, Kota



Design, Beauty & Quality - Hallmarks
of a luxurious lifestyle : Landmark City

Experience the high living in the tallest building around.

You stand tall & proud, we have created **Landmark Crown** for you. The residential complex at Landmark City, Bundi Road, Kota. It promises to become a new Benchmark and that way, a home in **Landmark Crown** will truly compliment your accomplishments.



Unveiling the New Hi-Tech Edu-Kingdom Across Chambal.....

A City within a City

LANDMARK CROWN



A World of comfort, the comfort of luxury...

The innovative designed living offered through an elegant style is sure to make you the happiest home owner.

The Ultimate bliss!





The high life

- ✓ 3-side open Apartments
- ✓ Villa-like Apartments
- ✓ Extra Spacious Balconies
- ✓ Elevated Garden Space

Spacious living room

Vitrified flooring lends elegance to the living & dining room. Spacious, bright and airy, you will always be surrounded by an aura of abundant natural light. It has been taste fully designed to ensure cross ventilation and breathtaking views form all the windows. Luxuriate in sheer splendor every day.

Luxurious master bedroom

An easy sense of space flows within the home striking

When you retire after a tiring day at work, it's but natural to seek your comfort zone. The master bedroom goes a step further to ensure that you relax in style. The surprising balance of privacy with luxury creates a refreshing experience altogether.



NOTE: All the accessories in the images above exhibiting furniture, cabinets, electrical appliances etc. are purely indicative and not a part of the offering. The size shown in only illustrator & prefer the 2D layout, before booking.



The heart of your home

Ultra modern designed Kitchen that makes you smile as you step in every morning. A warm and user friendly design that has everything to make your life easy and comfortable.

Modern Design Kitchen



Designer Washroom

The Glamour Quotient loaded with Style & Comfort

It isn't just a bathroom! It is where you would want to relax and de-stress yourself! It is where you would indulge yourself amidst all modern amenities and appliances. Truly a Glamour Room!





LANDMARK CROWN

Your Home Reflects Your Choices and Builds Your Individuality Too

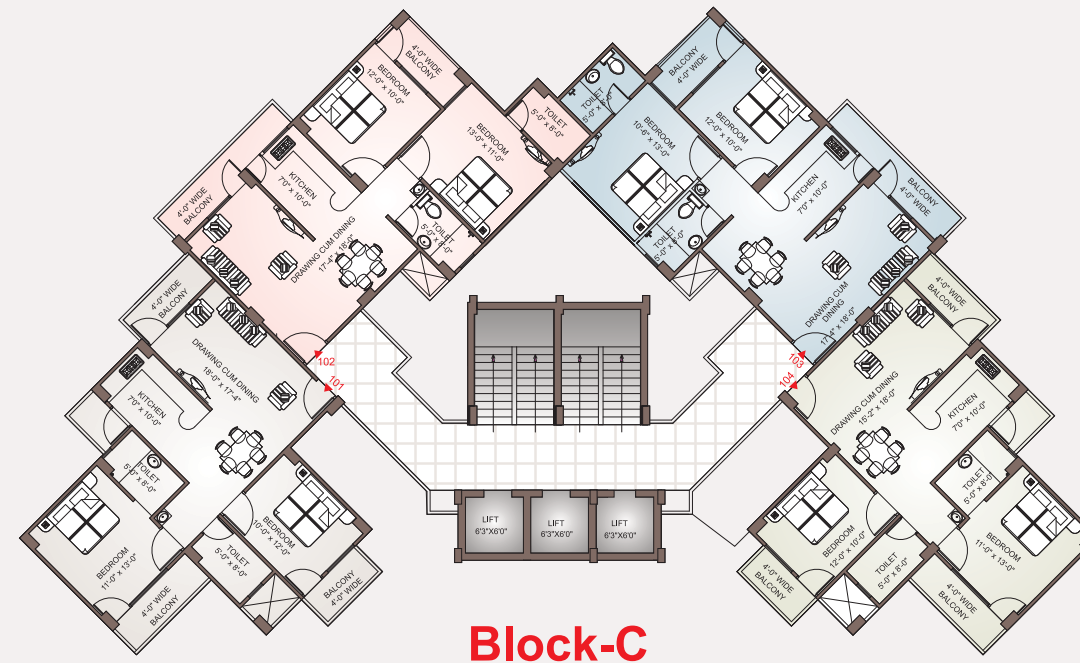
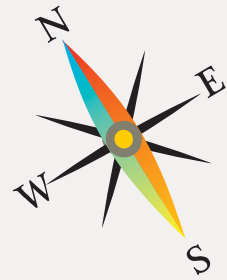
Landmark Crown is conceived to strengthen this unique relation between you and your home. It is designed to reflect your taste, and at the same time, it is able to raise your living.



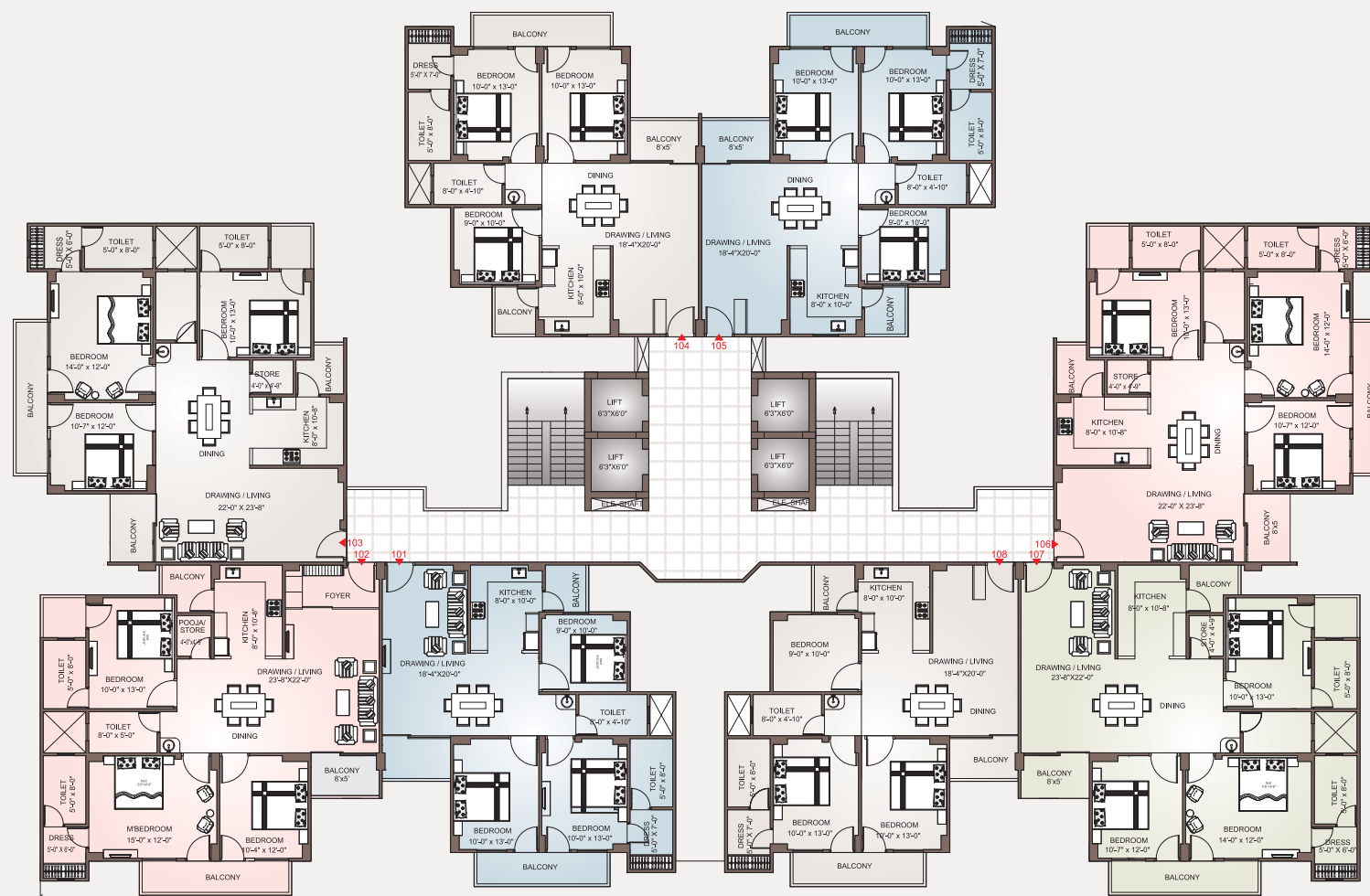


TYPICAL FLOOR PLAN

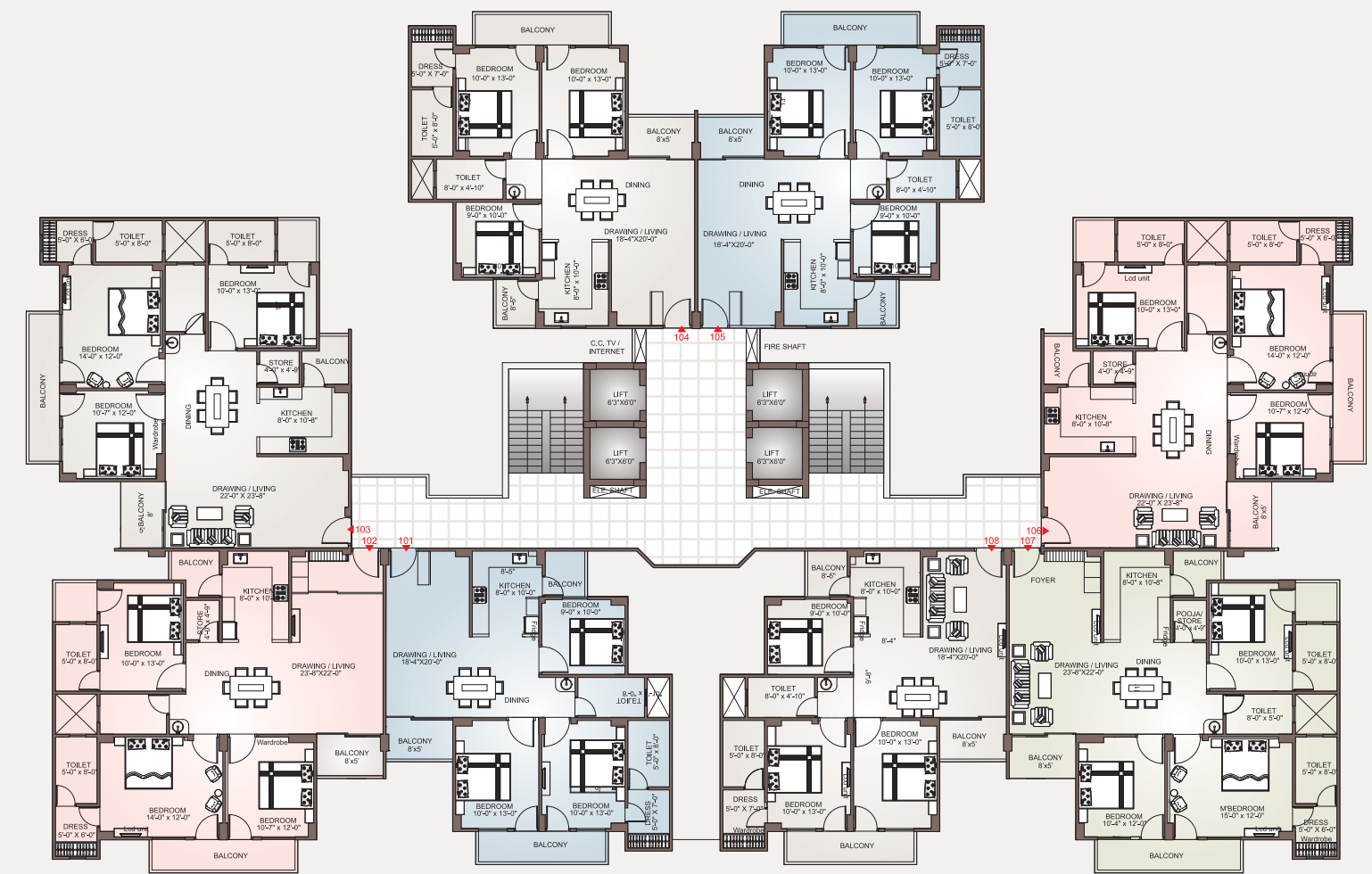
(1st to 10th floor)



Block-C



Block-A



Block-B



Swimming pool



Club house



Water bodies



Well landscaped Garden & Elevated Podium



Sitting area senior citizen corner



Open air theater



Children play area



Gymnasium & Health center



Ample car parking



High Quality Elevators



24 hours guarded security



generator backup for common areas



Intercom facility

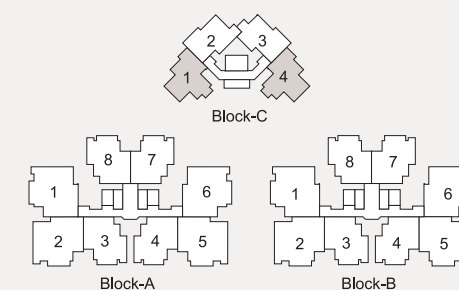
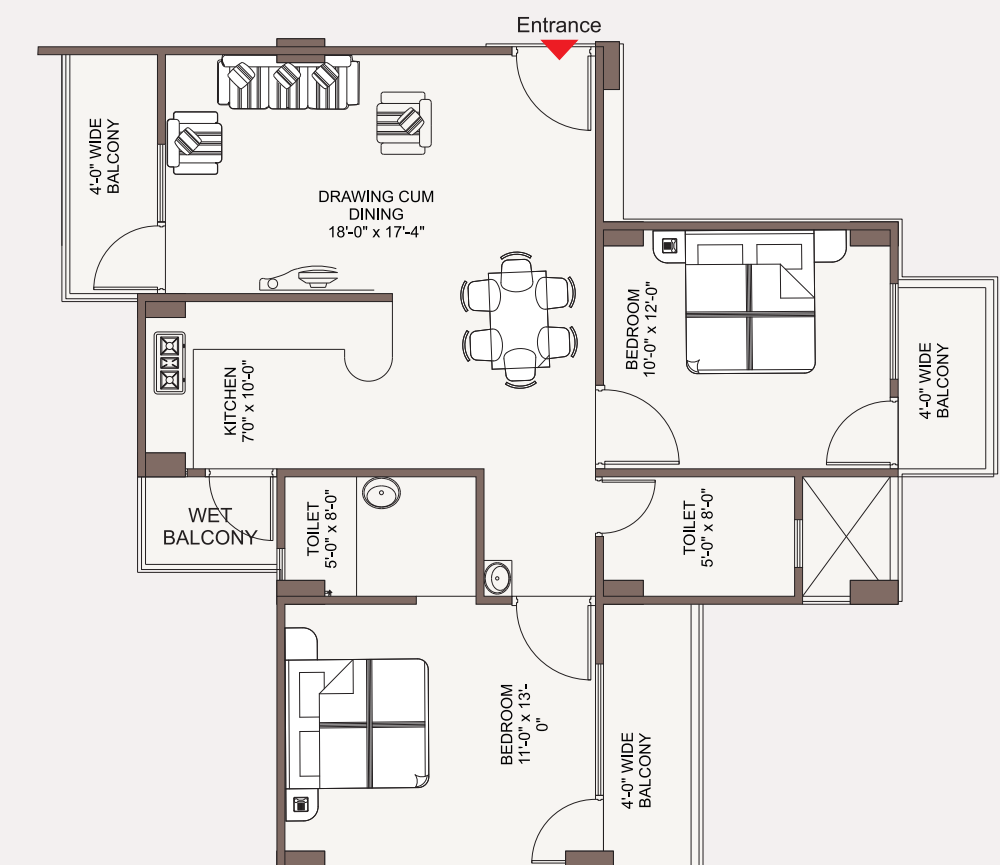
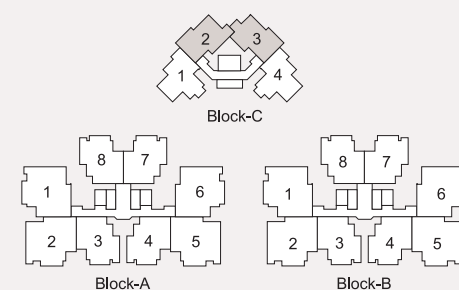
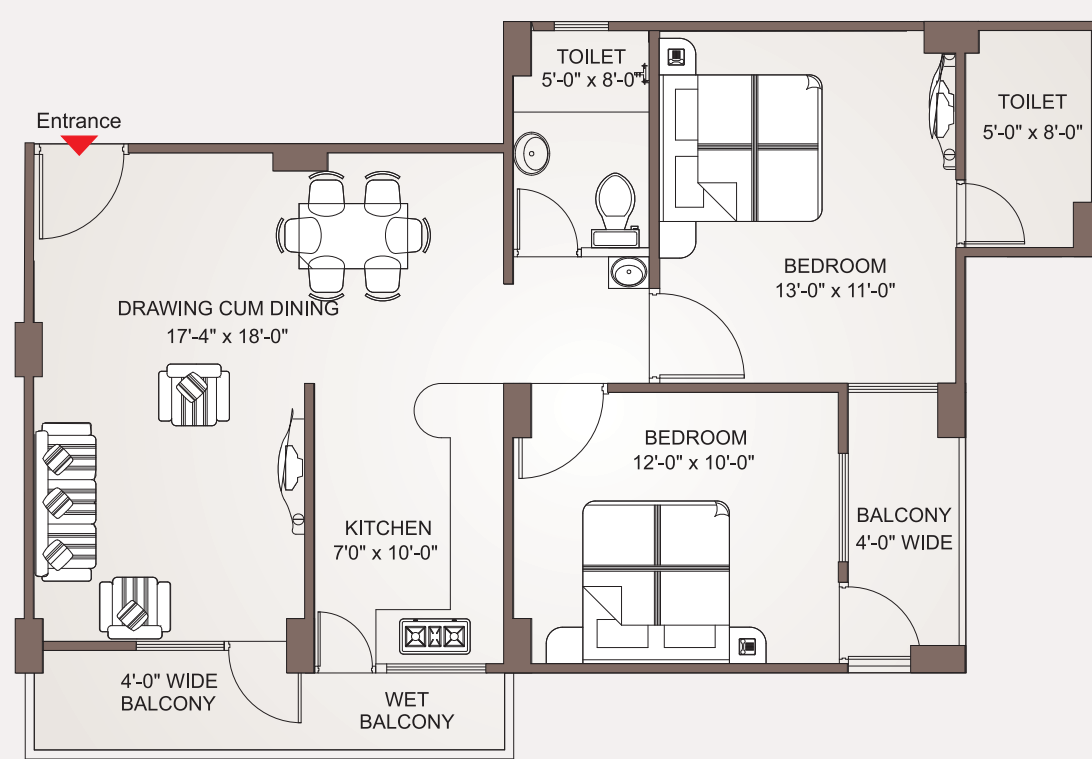
2 BHK Deluxe SBUA : 1065 SQ.FT. 20 Units

Builtup area less 25%



20 Units SBUA : 1143 SQ.FT. 2 BHK Premium

Builtup area less 25%



2½ BHK

SBUA :1348 SQ.FT.

80 Units

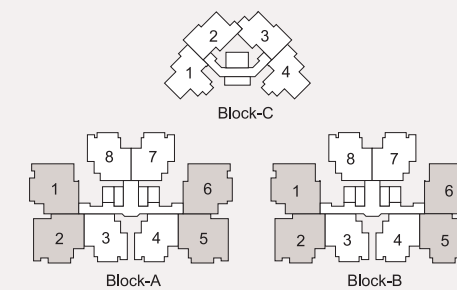
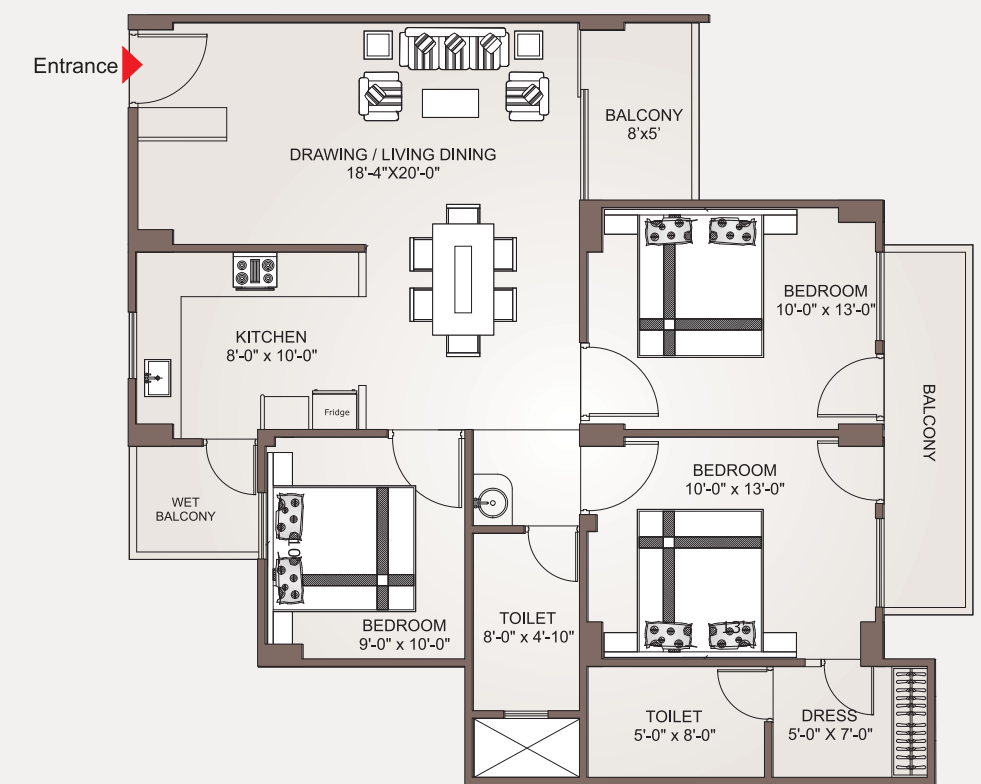
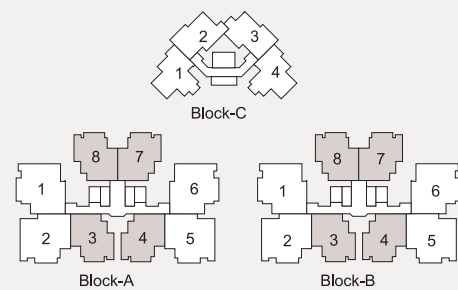
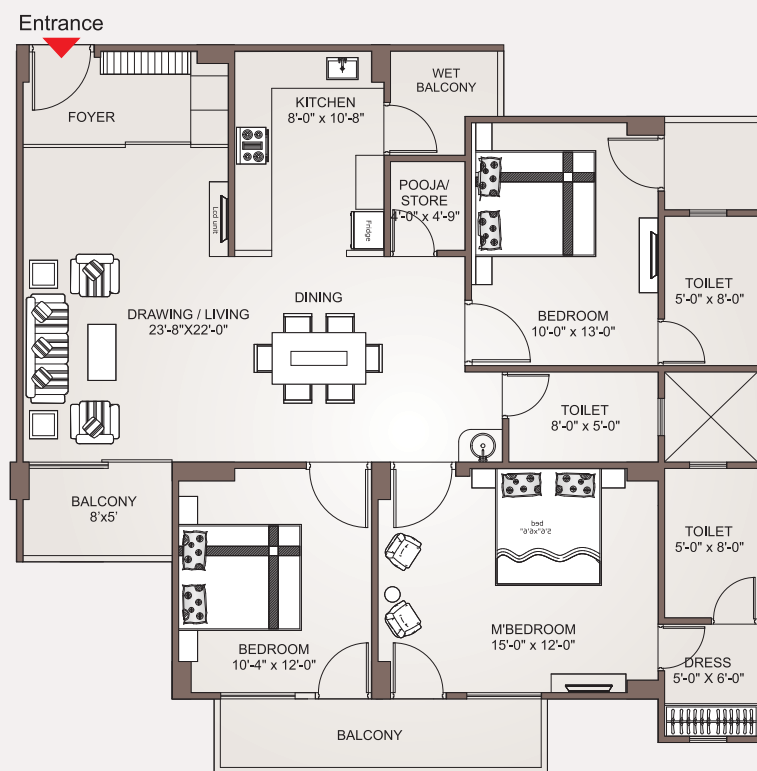
Builtup area less 25%

80 Units

SBUA : 1710 SQ.FT.

3 BHK

Builtup area less 25%



NOTE: All the accessories in the images above exhibiting furniture, cabinets, electrical appliances etc. are purely indicative and not a part of the offering. The size shown in only illustratior & prefer the 2D layout, before booking.

FRESH & FABULOUS @ THE CLUB HOUSE



RELAX, REFRESH & REJUVENATE @ AMPHITHEATER



LANDMARK CROWN

A Rare View where
Luxury & Nature.....
Go Hand In Hand!



EXPERIENCE

At Landmark Crown ... there won't be a single dull moment in your life as we have chalked out special amenities for joyful family life. It's time to fulfill all those desire you longed for yourself and your family.



The high life

- ✓ Water bodies
- ✓ Well landscaped Garden & Elevated Podium
- ✓ Sitting area senior citizen corner
- ✓ Children play area



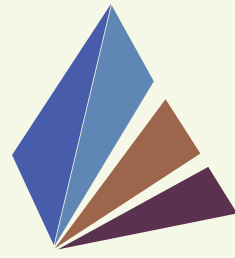
LANDMARK CROWN



Elevated Central Podium Space

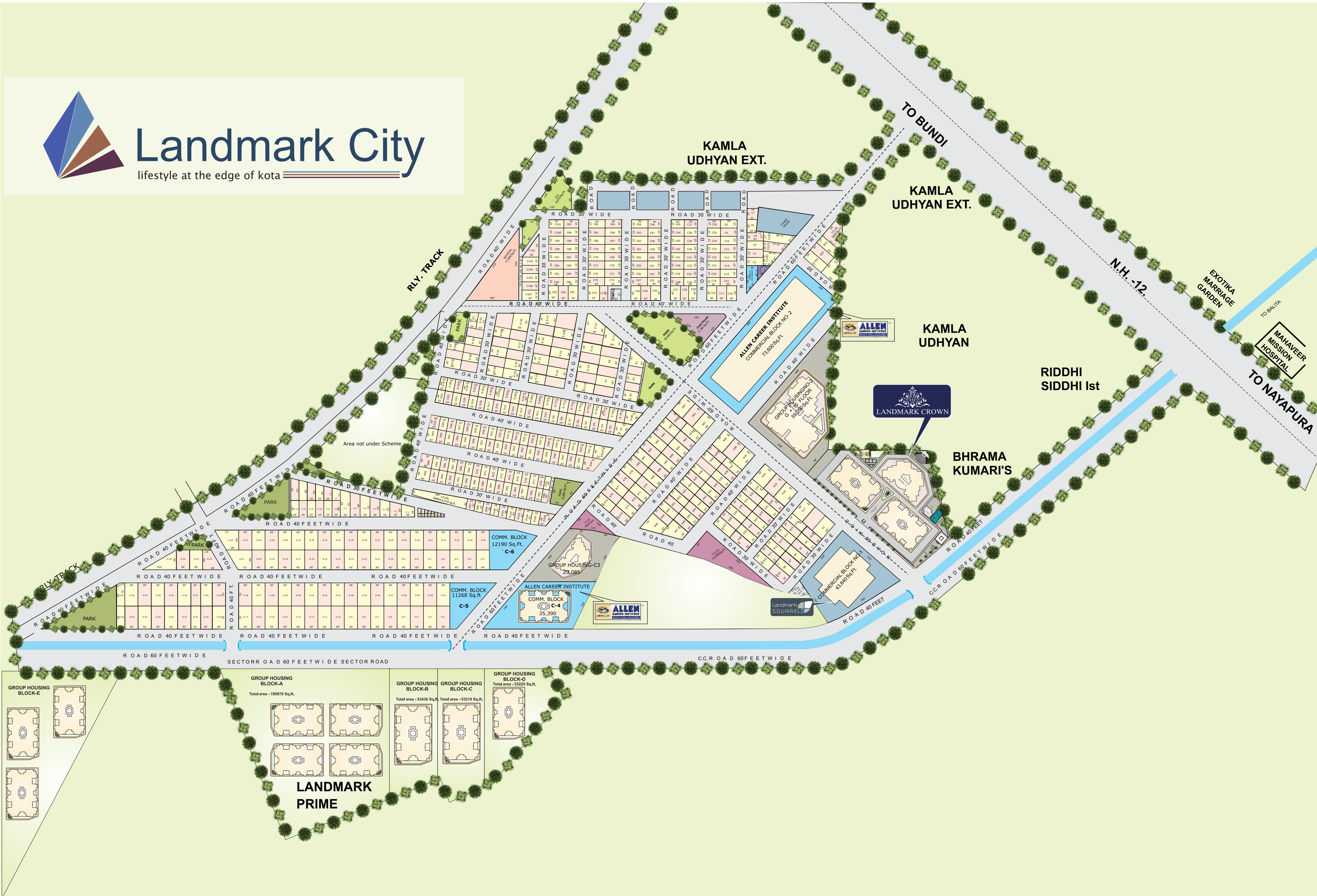
Start your morning in the most cheerful way, get close to the nature. Just spend few minutes in the delicately developed Elevated garden space and get recharged for the day ahead. Or, spend your evenings leisurely with friends and indulge into refreshing chatter. Or just be with yourself and feel the pleasure of deep solitude... all this in no longer a distant dream for you. Landmark Crown has been crafted to meet all your dreams.

Designs that epitomize elegance and charm





Landmark City


lifestyle at the edge of kota




SPECIFICATIONS

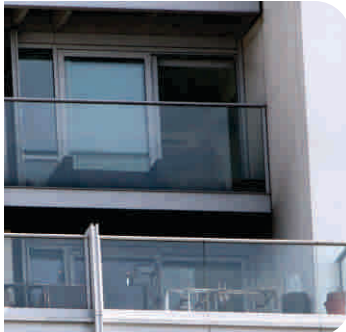
DRAWING / DINING	FLOORING	Vitrified Tiles	
	WALLS	POP Punning with Acrylic Emulsion	
	CEILING	Design False Only	
	FITTINGS/ FIXTURES	Provision for Split AC(Copper Sleeve, Drain and Electrical Points) Texture Wall	


BEDROOMS	FLOORING	Vitrified Tiles	
	WALLS	POP Punning with Acrylic Emulsion	
	CEILING	Acrylic Emulsion	
	FITTINGS/ FIXTURES	Provision for Split AC(Copper Sleeve, Drain and Electrical Points)	

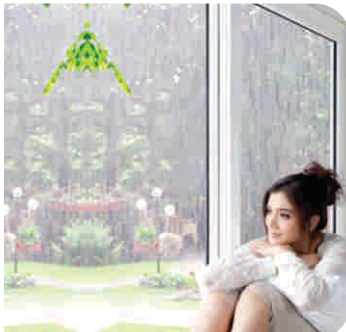
MASTER BEDROOM	FLOORING	Wooden	
	WALLS	POP Punning with Acrylic Emulsion	
	CEILING	Acrylic Emulsion	
	FITTINGS/ FIXTURES	Provision for Split AC(Copper Sleeve, Drain and Electrical Points)	


MODULAR KITCHEN	FLOORING	Anti Skid Ceramic Tiles/Vitrified Tiles	
	WALLS	Ceramic Tiles upto 2ft. above counter and Plastic Emulsion Paint on rest of the area	
	CEILING	Acrylic Emulsion	
	COUNTER	Granite	
	FITTINGS/ FIXTURES	CP Fitting & Stainless Steel Sink	


TOILETS	FLOORING	Anti Skid Ceramic Tiles	
	WALLS	Combination of one or more of Digital Tiles/ Plastic Emulsion Paint	
	SANITARY WARE/ CP FITTING	Branded Lever CP Fittings, Sanitary Wares	
	CEILING	Plastic Emulsion Paint	

BALCONY/ UTILITY AREA	FLOORING	Anti Skid Ceramic Tiles	
	WALLS	Exterior Paint	
	CEILING	Exterior Paint	
	RAILING	M.S. Railing as per elevation	

ELECTRICAL	FITTINGS & FIXTURES	Branded Modular Switches and Copper Wiring	
	INVERTER	Inverter Provision In Each Flats	
	POWER BACK UP	100% DG Power Back up for all Common Area	

DOORS/ WINDOWS	DOORS INTERNAL	Door Frame with Flush Door	
	DOORS EXTERNAL	Flush Doors with beading / skin premium lever type handles	
	WINDOWS	Aluminium Powder Coated/UPVC	

SECURITY SYSTEM	Peripheral Boundary Wall Protection 24x7 security Provision for central security, Gated Community, Access Control at entrance, CCTV for Parking Area Efficient Common Area lighting	
-----------------	---	---

PLUMBING	<ul style="list-style-type: none"> • Branded PPR for water supply • UPVC • PPR/ CPVC/ UPVC Piping for water supply 	
----------	---	---

SERVICES & FACILITIES



POWER BACKUP

- Power Back up for Common Area
- Power backup in each flat up to 800 VA



LIFT LOBBY

- High Speed 11 Passenger Elevators
- Natural Stone Tiles
- Combination of Granite, Plastic Emulsion Texture Paint and Mirror



ELECTRICAL SYSTEM

- Copper wiring for all electrical points in concealed conduits of reputed make like Finolax or equivalent
- High Quality Modular Switches of reputed make like legrand, Schneider or Equivalent



AIR-CONDITIONING

- Provision for Split AC in all rooms Living/ Dining (Copper Sleeve, Drain and Electric Point only)
- Air Conditioned Club, Waiting Area and Entrance Lobby



WATER MANAGEMENT

- 24 hrs Water supply
- Water drainage system
- Rain water harvesting



PARKING

- Covered/ stilt parking/ open parking available

the Group



Bhatia Colonizers Pvt Ltd

About Bhatia Group

As a fully integrated, multi-discipline automobile company based in Rajasthan. Bhatia Group enjoys a long history and broad experience in the field of Automobiles & Real Estate. Despite the fierce competition in today's arena, Bhatia Group continues to diversify and consolidate other business like Real Estate development. It has established the fact that the group can grow and adapt to suit the current business needs and demands while still retaining leadership in its new businesses. At work, we combine strategy, planning and methodical research for economic, environmental, technological & community insights, hence helping customers realize their dream of better of the best returns on investment.

The fusion of talent and experience of our top-notch management team is supported by an equally qualified team at the middle and junior management levels. After the over whelming response of the launch of Ganpati Windsor Park, our teams strive hard to put in their best to ensure delivery of value enhancements on schedule. Its just one of the ways we build trust and construct future.

About Shubham Group

Shubham Group has established its reputation in over 7 projects comprising of 3 projects under development and 4 completed projects. These include Residential Flats, Out Houses, Group Housing, Integrated Township, and Commercial Complexes in Rajasthan.

Since the Group's inception, Director's Deepak Rajwashi and Arun Mehta thrived to transform innumerable dreams into reality. Their vision has inspired the group to create residential edifices for all cross-sections of the society. With its onward march towards excellence, the group intends to induce innovative changes in the lives of people at basic level and create lifestyle avenues for the people at higher level. The group's strength is more than 1000 satisfied customers and investors. This is due to the Group's quality consciousness and prompts after sales service.

Recognition & respect are the assets gathered over the period. Shubham stands tall with the symbols of trust, transparency, value & creativity. At Shubham we believe that inside the brick and mortar of our buildings lies a dream your dream. We know that when you buy that space you can call you own, it is not just a physical space. It is efforts of your past invested to make better future. Our work is a representation of quality, creativity & openness but most importantly it is representation of all over delighted customers along with whom we have reached soaring heights today.

We Welcome you to be a part of dynamically expanding family

.....to meet the demands of honorable customers who seek for an elegant architecture with unique and contemporary designed Homes to suit the lifestyle of Kings, Queens and themselves, the new association of the two groups, has come up with A Truly Exceptional Integrated Township "Landmark City", Adjoining Housing Board Scheme, Bundi Road, Kota constituting of four fold phase development of new style residential avenues, commercial promenade and lot more.....

ONGOING PROJECTS



Mahalaxmipuram Phase-II
@ Baran Road



Landmark City
@ Bundi Road



Windsor Park
@ Bundi Road



City Center Heights
@ Bajrang Nagar

UPCOMING PROJECTS



Benchmark Township
@ Baran Road



Landmark Square
@ Bundi Road



Mile Stone
@ Baran Road



Landmark Prime
@ Bundi Road

COMPLETED PROJECTS



Mahalaxmipuram Phase-I
@ Baran Road



Surya Residency
@ Railway Station



Divya Shubham Farm Houses
@ K. Patan Road



UPCOMING COMMERCIAL MALL

SHOP COUNTY

- Lifestyle Showrooms
- Hyper Market
- Kiosk Market
- Designer Boutiques
- Designer Gallery
- Art Gallery
- Beauty Saloon
- Furnishing
- Gymnasium

FUN ZONE

- Huge Fun & Gaming Zone
- Pub/Disco/Lounge/Club
- Coffee Shop

FOOD FIESTA

- Food Court
- Theme Restaurant
- Coffee Shop



Landmark
SQUARE

Area : 43640 Sq. Ft

Our Milestones